

Spore-forming Bacilli Toxin

❖ Spore-forming Bacilli including *Bacillus* & *Clostridium*

Bacillus

- ✓ **Bacillus** is large gram-positive rods, **endospore-forming**.
- ✓ Aerobic or facultative anaerobic, have arranged in long chains.
- ✓ Most are saprophytic (soil, water, and air).
- ✓ Have **2** species of medical importance: *Bacillus anthracis* & *Bacillus cereus*

B. anthracis

B. anthracis: large, block shaped rods with **central spore's and causes** anthrax of the animals and humans. **Including** two virulence factors:

- 1- **Capsular polysaccharide**: inhibits phagocytosis, encoded by a plasmid.
- 2- **Anthrax toxin**: made up of 3 fractions, **Edema factor** (EF or Factor I), **Protective antigen factor** (PA or Factor II), and **lethal factor** (LF or Factor III).

They are not toxic individually, the whole complex produces local edema & shock

B. cereus

B. cereus: rods shaped **terminal spores with square ends**, and **causes** food poisoning & opportunistic infections. Including 2 types of toxin:

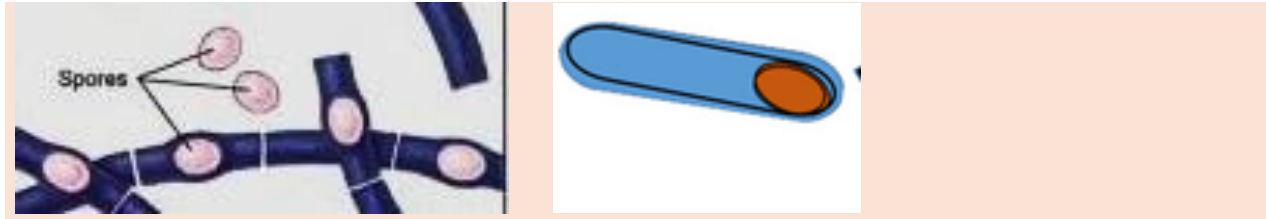
- 1- **Protein enterotoxin**: Heat-labile, this type is transmitted mostly by milk products and produced in small intestinal and causes watery diarrhea,
- 2- **Cyclic peptide emetic toxin**: Heat- stable, this type is transmitted mostly by rice and produced in food and causes vomiting.

Laboratory diagnosis

- 1-Diagnosis according to the **clinical signs important** for the type of disease.
- 2-**Injection of laboratory animals**, mouse or guinea pigs.
- 3-Using serological methods.

Spore-forming Bacilli Toxin

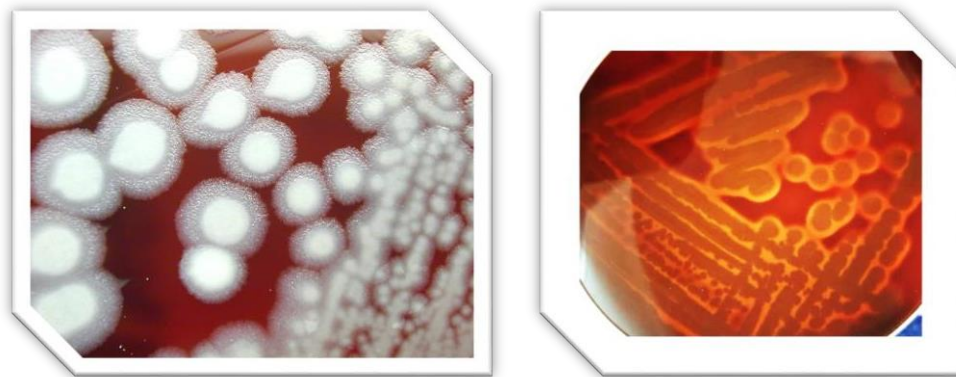
4-Microscopic examination



5-Culture sample

B. anthracis Selective media called **Polymyxin lysozyme-EDTA- thallium acetate agar (PLET)**. On **blood agar** appearance flat or slightly convex with irregular edges and ground-glass. There are often comma shaped projections from the colony edge producing a “Medusa-head” colony.

B. cereus a large, smooth, pink colonies with mousy smell on **MacConkey's agar**. Lactose non-fermenter colonies and central black. **Bacillus cereus Agar Base** is a medium used with **supplements** for the selective detection of *Bacillus cereus* in food.



6- Biochemical tests.

Species	motility	B-hemolysis ON blood agar	Penicillin	7%NaCl	Capsule
<i>B. anthracis</i>	non	non	Sensitive	growth	Capsular
<i>B. cereus</i>	+	+	Resistant	non	Non-Capsular